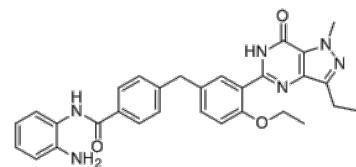


Product Name : CM-675
Cat. No. : PC-35926
CAS No. : 1872466-47-1
Molecular Formula : C₃₁H₃₂N₆O₃
Molecular Weight : 536.636
Target : HDAC
Solubility : 10 mM in DMSO



Biological Activity

CM-675 (CM675) is a potent, dual **PDE5** and **classI-HDAC** inhibitor with IC₅₀ of 114/673 nM for PDE5A/HDAC1, respectively.

CM-675 displays >10-fold selectivity over HDAC6.

CM-675 induces significant cellular responses (AcH3K9 and pCREB) at low concentrations (26-100 nM) with little cytotoxicity.

CM-675 shows an adequate ADME-Tox profile and in vivo target engagement (histone acetylation and cAMP/cGMP response element-binding (CREB) phosphorylation) in the central nervous system (CNS).

References

Rabal O, et al. *ACS Chem Neurosci*. 2018 Dec 10. doi: 10.1021/acscchemneuro.8b00648.

Caution: Product has not been fully validated for medical applications. Lab Use Only!

E-mail: tech@probechem.com